

Uniform Inspection Checklist - Hoarding / Excessive Clutter

Date:		Person Completing This Form:							
Address: (optional)		Town:			Male/Female (M or F)				
Age Range: (place 'X' in field)	18 and under	19 - 24	25-34	35-44	45-54	55-64	65-74	75-84	84 +

RESIDENT: The purpose of inspection is to ensure housing is decent, safe, sanitary, and in good repair. Inspector must be able to view, reach, and test all items on inspection checklist.

INSPECTOR: Please be mindful of the distinction between hazardous vs. housekeeping.
Please record comments and/or deficiencies in specifics.
Please rate each room using both the Priority Scale and the Clutter Image Rating Scale.

**START
HERE**

STEP 1: HARM REDUCTION TARGETS	STEP 2: PRIMARY INSPECTION TARGETS
The following items must be UNOBSTRUCTED : ~completely clear of any items~	The following items must be ACCESSIBLE : ~easily able to be reached by inspector~
<input type="checkbox"/> Egresses - means of exit <input type="checkbox"/> Min. 36" unobstructed & continuous pathways throughout residence <input type="checkbox"/> Smoke detectors, CO detectors, & sprinkler heads (all that apply) <input type="checkbox"/> All doors: including closet, cabinet, pantry, etc. (inspector must be able to open & close all doors freely, & be able to latch if applicable) <input type="checkbox"/> Minimum of 1 unobstructed window in living room, each bedroom, and any other room in home with windows for emergency exit <input type="checkbox"/> Toilets, stoves, ovens, refrigerator, washing machine/dryer, open flame heat sources, fireplaces, water unit, a/c, heat thermostats, trash containers <input type="checkbox"/> Emergency pull cords - end of cord must be no more than 18" from the floor (if applicable)	<input type="checkbox"/> Electrical panel/outlets <input type="checkbox"/> Windows (any not included on unobstructed list) <input type="checkbox"/> All plumbing fixtures & pipes, including plumbing under all sinks <input type="checkbox"/> All heat sources <input type="checkbox"/> Sinks, bathtubs, & showers

1. Living Room		Pass (X)	Fail (X)	Inconclusive (X)	Priority Scale (mark with X, date, or status)				
Code	Description				Immediate	30 day +			
1.1	Electrical outlets accessible								
1.2	Free of electrical hazards								
1.3	Windows must be accessible with a minimum of 1 unobstructed window for emergency exit								
1.4	Exposed flooring must be free of debris								

Clutter Image Rating (X)	1	2	3	4	5	6	7	8	9
---------------------------------	---	---	---	---	---	---	---	---	---

2. Kitchen		Pass (X)	Fail (X)	Inconclusive (X)	Priority Scale (mark with X, date, or status)				
Code	Description				Immediate	30 day +			
2.1	Electrical outlets accessible								
2.2	Free of electrical hazards								
2.3	Windows must be accessible								
2.4	Exposed flooring must be free of debris								
2.5	Stove, range w/ oven - interior, exterior, & top must be clean & free of debris NO flammable items on or within 6" of stove top								
2.6	Refrigerator & freezer clean, not overfilled, no expired or rotting food								
2.7	Sink must be functional & show routine use & care								
2.8	Kitchen area must have a clear & clean space sufficient for food preparation								
2.9	All pilot lights must be lit (if gas)								

Clutter Image Rating (X)	1	2	3	4	5	6	7	8	9
---------------------------------	---	---	---	---	---	---	---	---	---

3. Bathroom		Pass (X)	Fail (X)	Inconclusive (X)	Priority Scale (mark with X, date, or status)				
Code	Description				Immediate	30 day +			
3.1	Electrical outlets accessible								
3.2	Free of electrical hazards								
3.3	Windows must be accessible								
3.4	Exposed flooring must be free of debris								
3.5	Sink, toilet, & shower must be functional & show routine use & care								

Clutter Image Rating (X)	1	2	3	4	5	6	7	8	9
---------------------------------	---	---	---	---	---	---	---	---	---

4. Primary Bedroom		Pass (X)	Fail (X)	Inconclusive (X)	Priority Scale (mark with X, date, or status)					
Code	Description				Immediate	30 day +				
	4.1 Electrical outlets accessible									
	4.2 Free of electrical hazards									
	4.3 Windows must be accessible with a minimum of 1 unobstructed window for emergency exit									
	4.4 Exposed flooring must be free of debris									
Clutter Image Rating (X)		1	2	3	4	5	6	7	8	9
5. All Secondary Rooms (living spaces & halls)		Pass (X)	Fail (X)	Inconclusive (X)	Priority Scale (mark with X, date, or status)					
Code	Description				Immediate	30 day +				
	5.1 Electrical outlets accessible									
	5.2 Free of electrical hazards									
	5.3 Windows must be accessible with a minimum of 1 unobstructed window for emergency exit									
	5.4 Exposed flooring must be free of debris									
Clutter Image Rating (X)		1	2	3	4	5	6	7	8	9
6. Building Exterior										
7. Heating and Plumbing		Pass (X)	Fail (X)	Inconclusive (X)	Priority Scale (mark with X, date, or status)					
Code	Description				Immediate	30 day +				
	7.1 All heating sources must be accessible									
	7.2 Baseboard heat sources must have min. 8" of clearance to allow free flow of heat									
	7.3 Open flame heat sources such as furnaces, water heaters, & fireplaces must be unobstructed									
	7.4 All plumbing fixtures & pipes must be accessible									
	7.5 Air vents (for heating & a/c) must be unobstructed, clean & clear of debris within 12"									
8. General Health and Safety		Pass (X)	Fail (X)	Inconclusive (X)	Priority Scale (mark with X, date, or status)					
Code	Description				Immediate	30 day +				
	8.1 All interior & exterior stairways & fire escapes must be unobstructed									
	8.2 Living room, bedrooms, and all other rooms with windows must have a minimum of 1 unobstructed window for emergency exit									
	8.3 No evidence of infestation									
	8.4 Garbage & debris must be removed from residence on routine basis									
	8.5 Other interior hazards:									
	a. no trip or fall hazards									
	b. no items stored over shoulder height of resident									
	c. no avalanche risk									
	8.6 Air quality: no excessive issue with mold &/or mildew									
	8.7 No decaying food or garbage (to attract vermin)									
	8.8 No extension cords under carpets or across floors or rooms of residence									
	8.9 No long-term storage of newspapers, magazines, papers, or flammable liquids to cause									
	8.10 No exposed or frayed electrical wiring									
	8.11 No inoperable or unregistered vehicles in yard									
	8.12 Emergency pull cord must be unobstructed with end of cord no more than 18" from floor (if									
	8.13 No excessive pet odor, pet hair, pet waste									

Clutter Image Rating Scale

Permission for use of Clutter Image Rating Scale granted by Oxford University Press.

198 Madison Avenue New York, New York 10016 212-743-8280 phone / 212-726-6494 fax www.oup.com/us



1



2



3



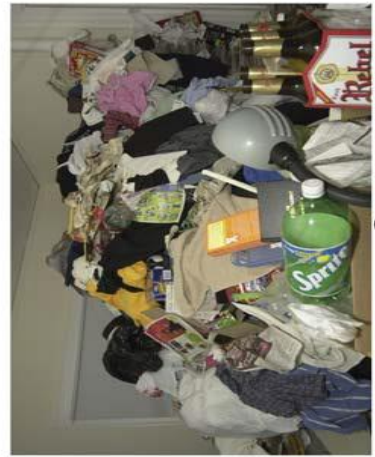
4



5



6



7



8



9

COMMENTS

Harm Reduction Targets: (refer to Step 1 on page 1) Example: Priority / Target Date(s) / Status / Comments	
Egresses:	
36" Pathways:	
Smoke/CO detectors/sprinkler heads:	
All doors:	
Minimum of one unobstructed window/room:	
Other Harm Reduction Target Concerns:	

General Safety & Inspection Targets:

Copyright 2014 This document developed by Marnie Matthews, MSW, LICSW for The Clutter Movement

Contact information: Marnie Matthews, MSW, LCSW email: marnie@TheClutterMovement.com phone no: 615.617.8454

Collaboration of North Shore Center for Hoarding and Cluttering, North Shore Peer Advisory Committee, North Shore Hoarding Task Force.